



# ULTRATREX EXCAVATOR MOUNTED SECTIONAL BARGE



CERT NO.: TUV100 01 2043  
ISO 9001:2015

UTX, YOUR TRUSTED PARTNER IN SHALLOW DREDGING EQUIPMENT

[www.amphibiosexcavator.com](http://www.amphibiosexcavator.com)

## INTRODUCTION

Ultratrex Machinery Sdn. Bhd. under 'UTX' branding is a leading producer in designing and custom made of high quality and versatile range of excavator mounted sectional barge. UTX is perpetual in the excavator mounted sectional barge business due to the organisation's reliability and capacity to supply high quality and competitive products. We can guarantee that high workmanship being maintained while producing the excavator mounted sectional barge. We always believe that our customers are our most valuable asset, thus, we always ensure that UTX complied with the company's quality system and customer's requirements are being met.

## MODEL

Ultratrex manufactures three models of excavator mounted sectional barge:

- 1) SB 2000 : Recommended for 20 ton class excavator
- 2) SB 3000 : Recommended for 30 ton class excavator
- 3) SB 5000 : Recommended for 50 ton class excavator

## APPLICATION

UTX's excavator mounted sectional barge is specially designed to perform excavation and dredging activity on deep water area. Our well designed excavator mounted sectional barge equipped with paddle wheel/ marine hydraulic thruster shall provides great mobility and this propulsion system enable the machine to move effectively from shallow to deep water. UTX' s excavator mounted sectional barge can be easily mobilized or transported by trucks and this help our customer's dredging projects on the inland rivers and lake.

Benefits of UTX's excavator mounted sectional barge:

- a) Modular design
- b) Designed to be containerized and truckable for land transportation
- c) Interlocking system easier for site installation
- d) Self propelled

UTX's excavator mounted sectional barge has proven to work effectively on the following areas:

- a) Deepening of canal, river channel, water reservoir and river mouth
- b) River sand mining
- c) Hydropower dam, inland river and lake dredging project

## FEATURES

### Sectional Barge Construction

- Marine steel plate Grade A
- 3 independent water compartments
- Sand blasting standard SA2.5
- High quality marine paint. Total paint thickness more than 250 micron

### Rack Gear Spud

- High precision rack gear teeth and pitch
- Hydraulic operated
- Robust design to give stabilization while digging in deeper water

### Sectional Barge Hydrostatic Drive

- High quality hydraulic motor
- Able to launch in shallow water
- Self propelled

### Locking System

- Interlocking system easier for site installation
- Strong connection between sectional barge

### Hydraulic Excavator

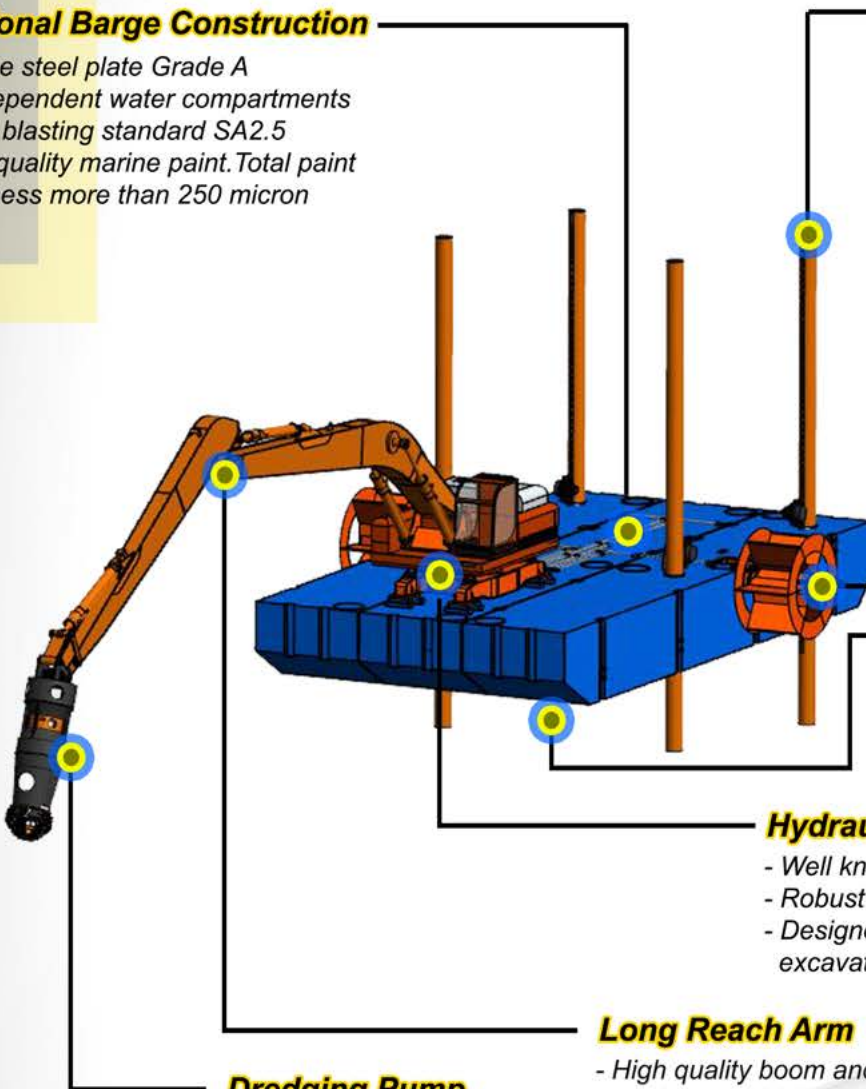
- Well known brand excavator
- Robust design slewing frame
- Designed to fit various kind of excavator

### Long Reach Arm

- High quality boom and arm to withstand high-impact materials
- Equipped with EM bushing
- CE certification

### Dredging Pump

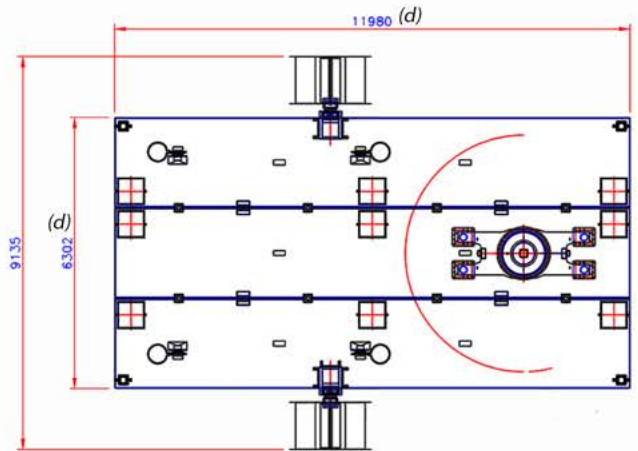
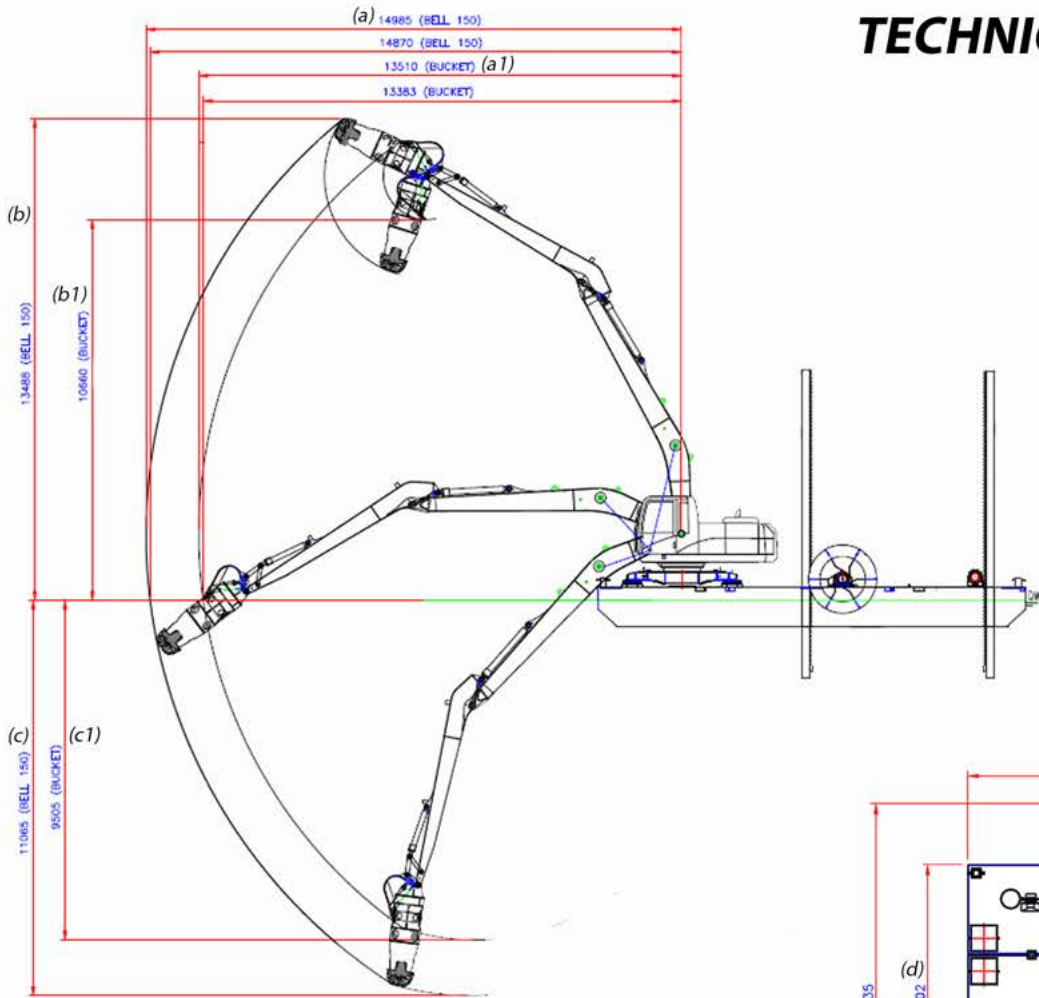
- High performance
- High productivity
- Easy to operate
- Origin: The Netherland



## OPTIONAL ITEMS

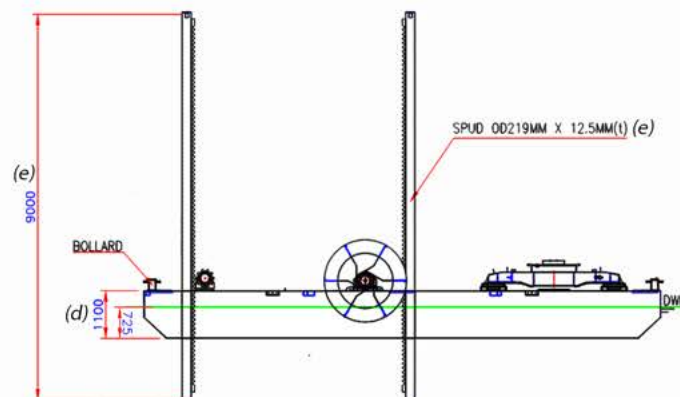
- Marine class certification
- Quick coupler
- Hydraulic clamp shell bucket
- Flexible rubber discharge hose
- HDPE discharge pipe
- 20 ft container for site office and storage (Only applicable for SB5000 model)
- Marine hydraulic thruster

**TECHNICAL SPECIFICATION**



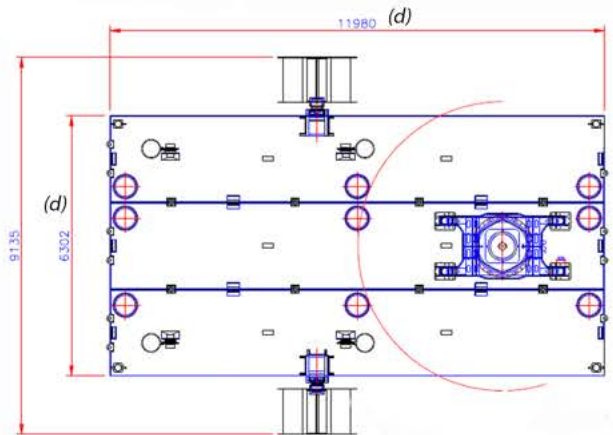
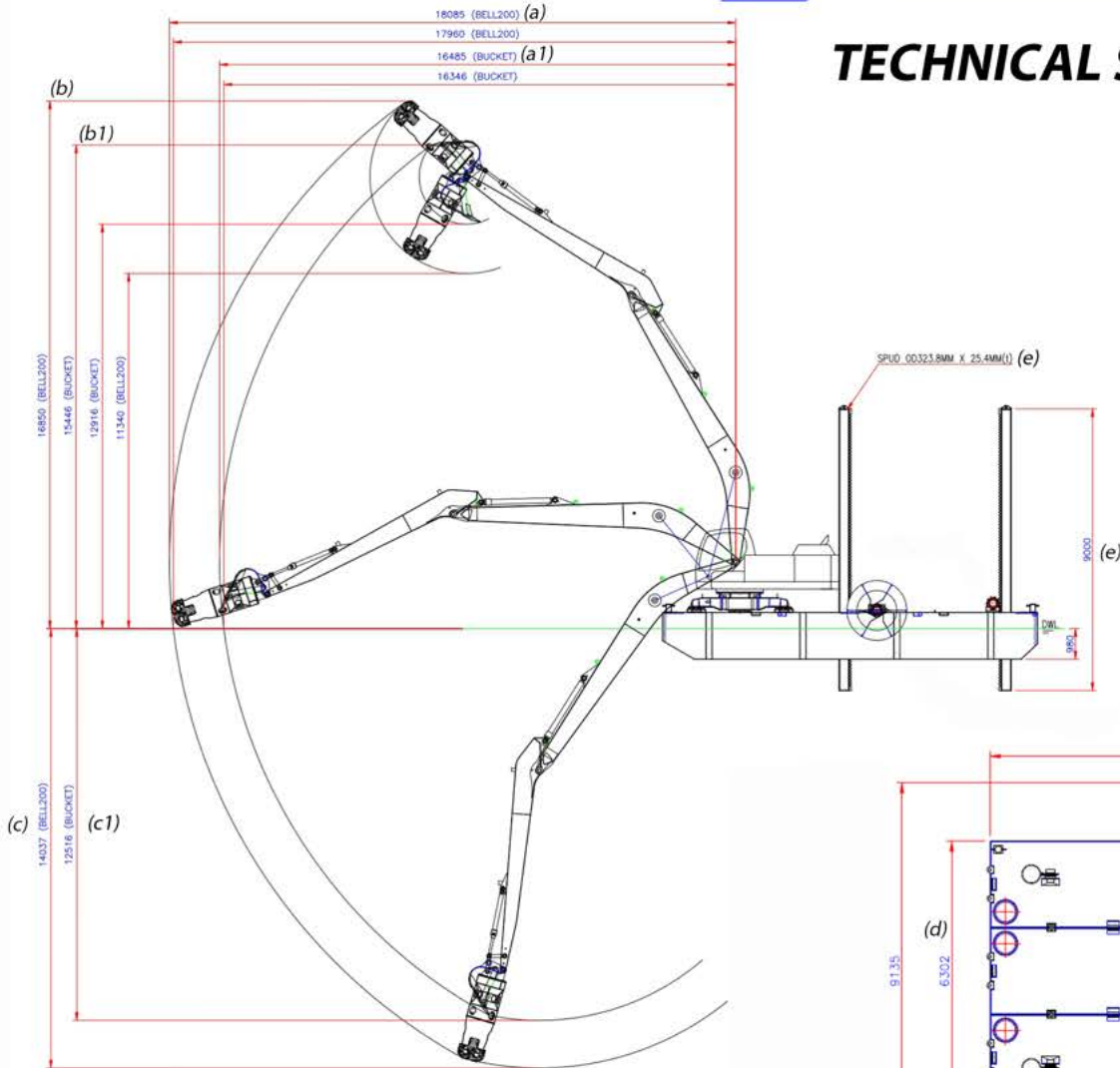
ITEM	UNIT	DREDGING PUMP	BUCKET
		VALUE	VALUE
(a), (a1): Max digging/Dredging reach	mm	14985	13510
(b), (b1): Max digging/Dredging height	mm	13488	12830
(c), (c1): Max digging/Dredging depth	mm	11065	9505

ITEM	UNIT	VALUE
(d): Barge dimension	m	12.0(L) x 6.3(W) x 1.1(H)
(e): Spud dimension	mm	219(OD) x 13(T) x 9000(L)
Plate type (top, bottom and side)	-	Marine steel plate grade A
Total weight barge with excavator	kg	41000
Float capacity	m <sup>3</sup>	81
Dredging pump mixture capacity max	m <sup>3</sup> /h	500
Propulsion	Paddle wheel / Marine hydraulic thruster	



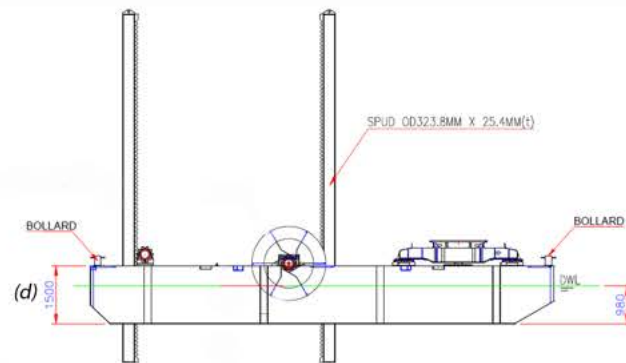
- Dimensions are based on 13.5m long reach arm, 0.5m<sup>3</sup> bucket and 6"/150mm (suction bore) dredging pump
- Dimensions, weights, float capacities, features and measures specified in the brochure may have variations. Ultratrex reserve the right to change it without prior notification

## TECHNICAL SPECIFICATION



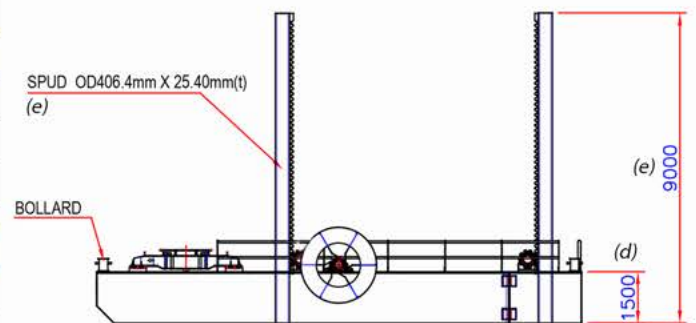
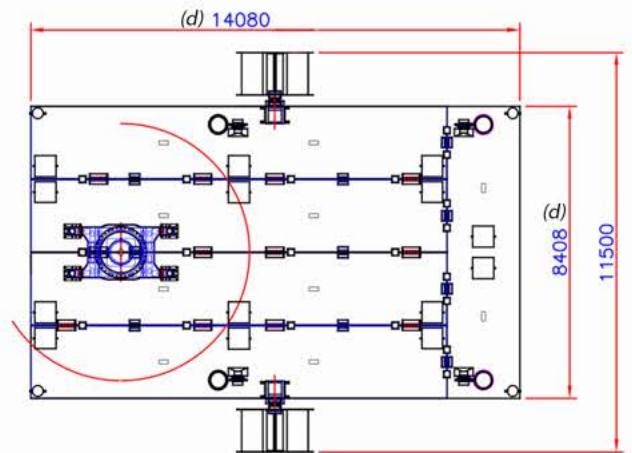
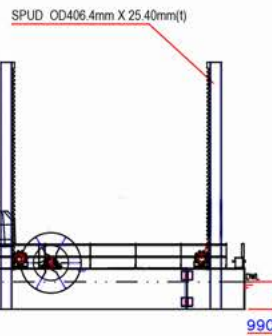
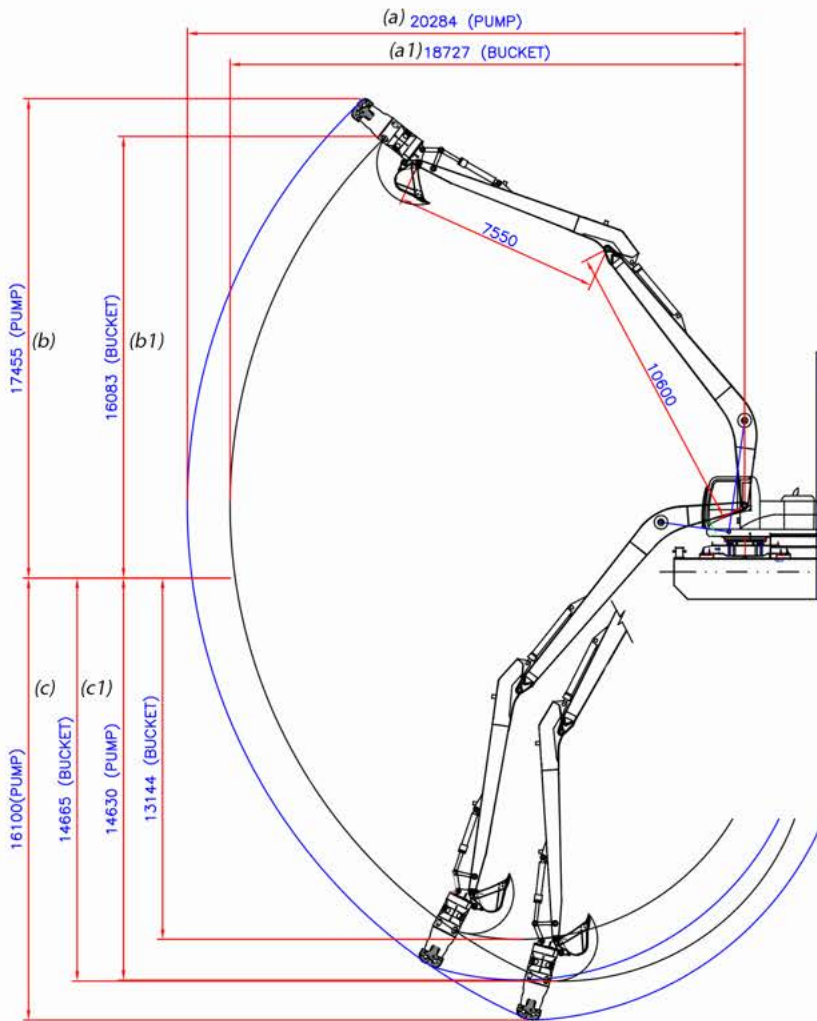
ITEM	UNIT	DREDGING PUMP	BUCKET
		VALUE	VALUE
(a), (a1): Max digging/Dredging reach	mm	18085	16485
(b), (b1): Max digging/Dredging height	mm	16850	15446
(c), (c1): Max digging/Dredging depth	mm	14037	12516

ITEM	UNIT	VALUE
(d): Barge dimension	m	12.0(L) x 6.3(W) x 1.5(H)
(e): Spud dimension	mm	324(OD) x 25(T) x 9000(L)
Plate type (top, bottom and side)	-	Marine steel plate grade A
Total weight barge with excavator	kg	57500
Float capacity	m <sup>3</sup>	111
Dredging pump mixture capacity max	m <sup>3</sup> /h	800
Propulsion	Paddle wheel / Marine hydraulic thruster	



- Dimension are based on 16m long reach arm, 0.9m<sup>3</sup> GP bucket and 8" / 200mm (suction bore) dredging pump.
- Dimensions, weights, float capacities, features and measures specified in the brochure may have variations. Ultratrex reserve the right to change it without prior notification.

## TECHNICAL SPECIFICATION



ITEM	UNIT	DREDGING PUMP	BUCKET
		VALUE	VALUE
(a), (a1): Max digging/Dredging reach	mm	20284	18727
(b), (b1): Max digging/Dredging height	mm	17455	16083
(c), (c1): Max digging/Dredging depth	mm	16100	14665

ITEM	UNIT	VALUE
(d): Barge dimension	m	14.1(L) x 8.4(W) x 1.5(H)
(e): Spud dimension	mm	406(OD) x 25(T) x 9000(L)
Plate type (top, bottom and side)	-	Marine steel plate grade A
Total weight barge with excavator	kg	95000
Float capacity	m <sup>3</sup>	174
Dredging pump mixture capacity max	m <sup>3</sup> /h	800
Propulsion	Paddle wheel / Marine hydraulic thruster	

- Dimension are based on 18m long reach arm, 1.2m<sup>3</sup> GP bucket and 8" / 200mm (suction bore) dredging pump.  
 - Dimensions, weights, float capacities, features and measures specified in the brochure may have variations. Ultratrex reserve the right to change it without prior notification.

**OPTIONAL EQUIPMENT**

**STORAGE SECTIONAL BARGE**

- Modular design
- Interlocking system easier for site installation
- Designed to be containerized and truckable for land transportation
- Storage capacity is designed as per customer requirement

**CATAMARAN WORK BOAT**

- Branded outboard motor.
- Robust design
- Designed to be containerized and truckable for land transportation
- Simple operation and control
- Built with safety features





## ***SOLUTION FOR INLAND DREDGING***

*[www.amphibousexcavator.com](http://www.amphibousexcavator.com)*